

ECER Technology  
**V-TECH** Vehicle Performance Measurer Quick Start Guide

*Table Of Contents*

<b>1</b>	<b><i>Introduction</i></b>	<b>3</b>
<b>2</b>	<b><i>Getting started with the TiltCONTROL</i></b>	<b>3</b>
<b>3</b>	<b><i>Using V-TECH</i></b>	<b>5</b>
<b>4</b>	<b><i>Activating the Program</i></b>	<b>10</b>

## 1 Introduction

Welcome to the V-TECH Quick Start Guide. The purpose of this guide will be to quickly guide you through the features of V-TECH and how it is used.

V-TECH is an application that runs on your Pocket PC and uses the TiltCONTROL device to measure the forward acceleration of the Pocket PC. If you place the Pocket PC in an automobile and accelerate in the direction indicated by V-TECH, it can be used to calculate your vehicles performance over the quarter mile.

Please read through the details of the following sections carefully before using V-TECH.

## 2 Getting started with the TiltCONTROL

V-TECH requires that the TiltCONTROL be calibrated correctly before it is used. To calibrate the TiltCONTROL you must launch the TiltCONTROL settings program.

This can be done by starting V-TECH and pressing the TiltCONTROL status icon shown below.

Note that this icon will change its appearance to indicate whether or not the TiltCONTROL is connected correctly. Figure 1 shows the different states of the TiltCONTROL status icon.

**Figure 1 TiltCONTROL Status icon**

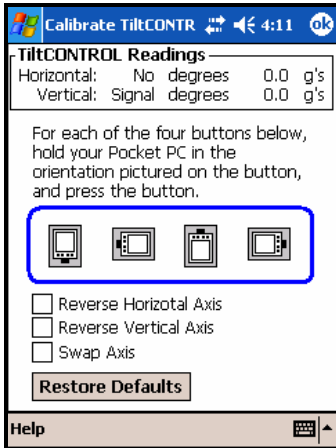


Once the TiltCONTROL Settings program has been launched you can select the Calibration Wizard or the Manual Calibration process to calibrate the TiltCONTROL. The Wizard will step you through the calibration process, whereas the Manual Calibration is a much faster process.

To calibrate manually press the **Manual Calibration** button.

The following screen in Figure 2 will be displayed.

**Figure 2 TiltCONTROL Manual Calibration**



Once the calibration screen is shown simply hold the Pocket PC in each of the four orientations as shown by the bitmaps circled in Figure 2, and press the bitmap once in that orientation.

Once you have done that for all four orientations your TiltCONTROL should be calibrated correctly.

### 3 Using V-TECH

Now that the TiltCONTROL is calibrated and working, it is time to get started V-TECH.

When you purchased V-TECH you would have also received an Activation Key that you will need in order to activate your version of the V-TECH software. For more information about how to activate the program, please read the section at the end of this guide. Until you activate you will only be able to run V-TECH 12 times.

Once you have installed V-TECH and the TiltCONTROL drivers you will find the V-TECH application in the Programs/TiltCONTROL/ folder. Launch V-TECH by tapping on the V-TECH icon.

Once in V-TECH you will be displayed with the screen shown in Figure 3.

Figure 3 V-TECH Main screen



#### GO button

The GO button is pressed when you want to start your performance run.

#### Seconds

The time elapsed since the start of the run.

#### G's

The current acceleration being exerted on the vehicle.

#### Meters or Feet

The current distance travelled.

**Km/Hr or Mile/Hr**

The current speed of the vehicle.

**Forward arrow**

This arrow indicates the direction that the vehicle must be travelling in.

Once you are ready to start your performance run follow the steps below:

1. Insert the TiltCONTROL into the Pocket PC. The TiltCONTROL status icon should change to a picture of a TiltCONTROL without the red line through it.
2. Place the Pocket PC on a reasonably flat surface in your vehicle.  
**NOTE:** V-TECH will compensate for any initial tilt of the Pocket PC.
3. Make sure that the Forward arrow is facing in the direction that you are heading.
4. Press the **GO** button.
5. Wait for V-TECH to tell you to Go.
6. Once V-TECH is ready the green **GO** button will change to a red **STOP** button. You can stop the run at anytime by pressing the red **STOP** button.
7. When you are ready to go, as soon as you start accelerating V-TECH will start measuring your acceleration and calculating your speed and distance travelled, until you reach ¼ Mile distance.
8. As you pass certain distances such as 60 Feet and 330 Feet V-TECH will print to the screen your speed and time at that distance.
9. Once you have completed the ¼ Mile V-TECH will tell you to stop and the red **STOP** button will change back to the green **GO** button.
10. The calculations of your performance run will be shown in the list on the main V-TECH screen.
11. To view a graph of your Speed, Distance or Acceleration you can select the **Graphs** menu item and choose to view any one of the Graphs.

## Menu Items

There are several menu items available in V-TECH, each is described below.

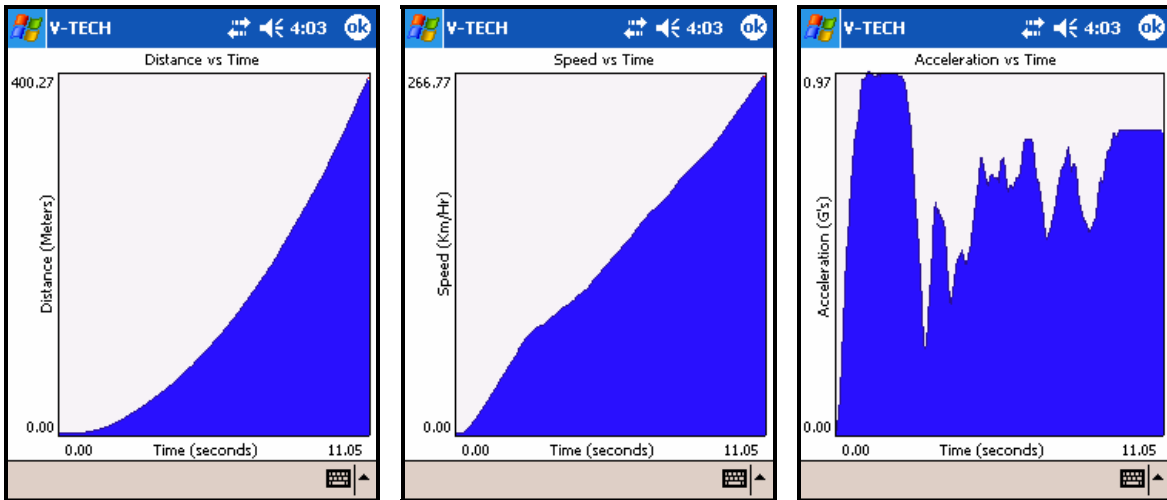
## Graphs

The Graphs Menu item lists all of that available graphs to be viewed.

You can view the following parameters against time as shown in Figure 4.

- Acceleration
- Speed
- Distance

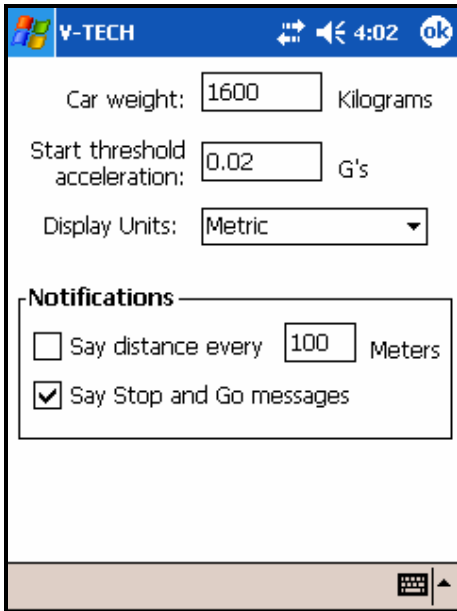
**Figure 4 Parameter Graphs**



**Settings->Preferences**

The **Settings->Preferences** menu item will display the preferences screen as shown in Figure 5.

**Figure 5 Preferences Screen**



Each of the items in this screen are displayed below.

**Car Weight**

Enter the weight of your car, in Kilograms or Pounds.

**Start Threshold**

The Start Threshold is the minimum acceleration that your vehicle must be accelerating at to start V-TECH measuring the performance run. The recommended value is 0.02 G's. If you have a vehicle that has a lot of vibration, you may want to increase this value to 0.05 G's or greater to stop premature triggering of the performance run.

**Display Units**

Select the units displayed to be either Metric or Imperial.

**Notifications****Say distance every X Meters or Feet.**

By enabling this notification and setting the X to a distance V-TECH will tell you your distance every X Meters or Feet.

**Say Stop and Go messages.**

By enabling this checkbox V-TECH will tell you when to STOP and GO.

**Help->Activate**

Select this option to activate your version of V-TECH.

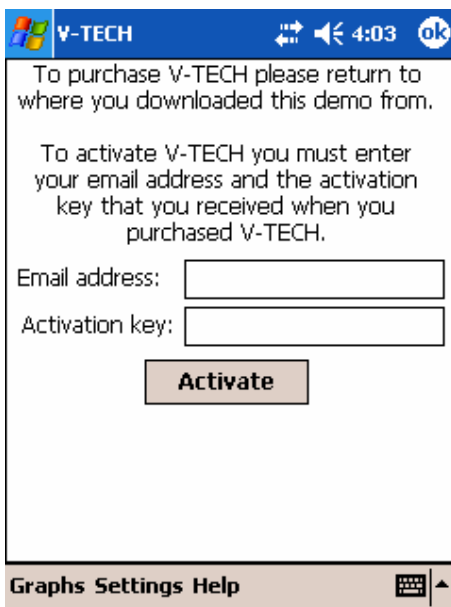
**About**

This will display the About box with version information and support information.

## 4 Activating the Program

When the V-TECH software is first installed it will run in Demo mode. When operating in Demo mode you will only be able to run V-TECH 12 times.

To activate the V-TECH software you will first need to purchase the software from ECERTech.com, at which time you will be supplied with an Activation key that is derived from the email address that you supplied when you purchased the software. Once you have this Activation key you will need to launch V-TECH on the Pocket PC, and select the **Activate Program** item from the **Help** menu. Once you have done this the Activate Program screen will be displayed as shown below. Simply enter your email address and the activation key that you were provided with and press the Activate Now button. You will either be shown a successful activation message or given a reason why the activation was not successful. Once activated, next time you start the V-TECH software it will run in full mode.



The screenshot shows the V-TECH activation screen. At the top, there is a blue header bar with the V-TECH logo, a speaker icon, the time 4:03, and an 'ok' button. The main content area contains the following text:

To purchase V-TECH please return to where you downloaded this demo from.

To activate V-TECH you must enter your email address and the activation key that you received when you purchased V-TECH.

Below the text are two input fields: "Email address:" and "Activation key:". Below these fields is a button labeled "Activate".

At the bottom of the screen, there is a navigation bar with the text "Graphs Settings Help" and a keyboard icon.

## **Contact Information**

**Website:** [www.ECERTech.com](http://www.ECERTech.com)

**Email:** [support@ECERTech.com](mailto:support@ECERTech.com)

**Ph:** +61 7 3822 7888