

ECER Technology **TiltMOUSE** Quick Start Guide



Table Of Contents

1	<i>Introduction</i>	2
2	<i>Getting started with the TiltCONTROL</i>	2
3	<i>Using TiltMOUSE</i>	4
4	<i>Activating the Program</i>	8

1 Introduction

Welcome to the TiltMOUSE Quick Start Guide. The purpose of this guide will be to quickly guide you through the features of TiltMOUSE and how it is used.

2 Getting started with the TiltCONTROL

TiltMOUSE can be used with a stylus or with a TiltCONTROL. If you are **NOT** planning on using the TiltCONTROL then please skip this section.

Once you have downloaded the latest version of the software from www.ecertech.com/downloads.aspx, make sure that your PDA is connected to your PC and run the setup file from your PC. This will install the software on your PDA.

To test the operation of the TiltCONTROL follow the steps below:

- Select **Start->Programs->TiltCONTROL->TiltCONTROL Settings**
- This will launch the TiltCONTROL Settings program.
- The next step is to plug the TiltCONTROL into the base of the PDA.
- If the software has been installed correctly, then you should be able to move your PDA around and see the TiltCONTROL Readings change as it is tilted.

NOTE: If it is not working then make sure the **Disable TiltCONTROL** checkbox is not checked.

- The next step is to calibrate the TiltCONTROL for your PDA. The quickest way to do this is to choose the **Manual Calibration** method, by pressing the **Manual Calibration** button. The **Calibration Wizard** is a more detailed step by step process of calibrating the TiltCONTROL and is fairly self explanatory so it will not be covered in this guide. Please feel free to go through the calibration process using the Calibration Wizard.
- Once you have pressed the **Manual Calibrate** button, the **Calibrate TiltCONTROL** screen will be displayed.
- Place the PDA flat on a desk or other flat surface and press the **Zero G Calibrate** button. This will calibrate the TiltCONTROL for Zero Tilt conditions. You should see the Horizontal Tilt and the Vertical Tilt stay around 0 degrees when the PDA is flat on the desk, if it has been calibrated correctly.
- To calibrate the TiltCONTROL more accurately you can also choose to calibrate it by placing it in the four positions where it will receive maximum tilt. Note that this step is **not** necessary, and will only result in minor gains in accuracy.
 - To do this you will need to calibrate the TiltCONTROL in the four different positions as shown at the bottom of the **Calibrate TiltCONTROL** Screen.
 - To calibrate in each of the four orientations simply hold the device upright, in the same orientation as shown in each of the four pictures shown and press each picture. You should see one of the calibration constants change to indicate that the device is being calibrated. The default value for each of the constants is 12.5. If the values are not within ± 3 of 12.5 then something has been done incorrectly, and you should try repeating the process.
- Press OK once you have finished calibrating the TiltCONTROL.

TIP: The TiltCONTROL will run all of the time and allow other applications to use the TiltCONTROL as long as the **Disable TiltCONTROL** check box is not set, which is shown on the main screen of the TiltCONTROL settings.

3 Using TiltMOUSE




Now that the TiltCONTROL is calibrated and working, it is time to get started with TiltMOUSE.

When you purchased TiltMOUSE you would have also received an Activation Key that you will need in order to activate your version of the TiltMOUSE software. For more information about how to activate the program, please read the section at the end of this guide. Until you activate you will only have a 30 second time limit each time you launch the TiltMOUSE program.

To get started you must first download and install the latest version of the TiltMOUSE software. This can be downloaded from www.ecertech.com/downloads.aspx.

Once installed you will notice two programs are installed, one on your Personal Computer and the other on your Pocket PC or SmartPhone.

The program on your PC will be started automatically and will also restart when your machine is restarted. There will be an icon in the bottom right corner of the Task Bar indicating that the program is running. The icon will look like one of the following pictures.

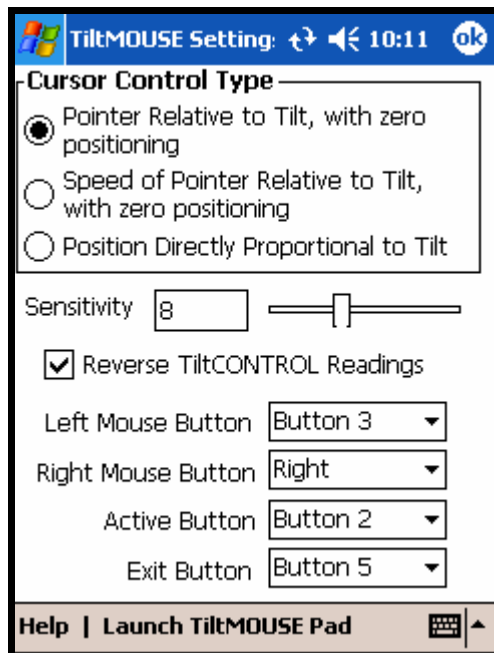
Tray Icon	Description
	This icon indicates that TiltMOUSE is enabled and the Pocket PC or SmartPhone is successfully connected to the PC. All you need to do now is start the TiltMOUSE program on the Pocket PC and launch the TiltMOUSE Pad.
	This icon indicates that TiltMOUSE is enabled but the Pocket PC or SmartPhone is NOT connected to the PC. Or some other error has occurred. If the Pocket PC or SmartPhone is connected then try doing a soft reset and reconnecting.
	This icon indicates that the TiltMOUSE is disabled.

You can right click on the icon to display a menu, in which you can disable the TiltMOUSE completely. Make sure it is enabled for this trial.

Now look on your Pocket PC in the folder Start Menu\Programs\TiltCONTROL, and you should find a program by the name of TiltMOUSE.

Run the TiltMOUSE program.

When TiltMOUSE is started the screen below will be shown.



Each of the items on this screen are described below.

Cursor Control Type

The Cursor Control Type specifies the method that will be used to control the cursor on the PC. Each Cursor Control Type is described below:

Pointer Relative to Tilt, with zero positioning

This method is similar to a normal touch pad on a Laptop.

When you place the stylus down on the screen the cursor on the PC will move relative to where you touched the screen.

When using the TiltCONTROL the zero position to which the PC cursor will move relative to, is the position the TiltCONTROL is at when the **Active** button is pressed.

Speed of Pointer Relative to Tilt, with zero positioning

This method is similar to the TrackPoint on most IBM Think pads, where the harder you push it the faster the mouse moves in the direction of force.

When you place the stylus down on the touch pad the cursor on the PC will move in the direction that you move the stylus, from where you placed the stylus down. The further from the initial point the faster the cursor will move.

When using the TiltCONTROL the zero position to which the PC cursor will calculate its speed and direction from, is the position the TiltCONTROL is at when the **Active** button is pressed.

Position Directly Proportional to Tilt

This is the simplest cursor control. The PC cursor will be displayed directly proportional to where the stylus is on the screen.

When using the TiltCONTROL, the PC cursor will be directly proportional to the tilt of the Pocket PC, when the **Active** button is pressed.

Sensitivity

Sets the sensitivity of the PC cursor movement.

Reverse TiltCONTROL Readings

If this checkbox is selected then the tilt of the Pocket PC will result in an opposite movement of the PC cursor. This feature is available so that the Pocket PC can be held upside down for better access to the buttons.

Left Mouse Button

The button that will be used as the left mouse button.

Right Mouse Button

The button that will be used as the right mouse button.

Active Button

The button that will be used for the **Active** button.

The **Active** button is used when using the TiltCONTROL. The TiltCONTROL's movements will only result in a movement of the PC cursor if the **Left**, **Right** or **Active** button is being pressed. This is the same as lifting the stylus from the screen and placing it in a different position.

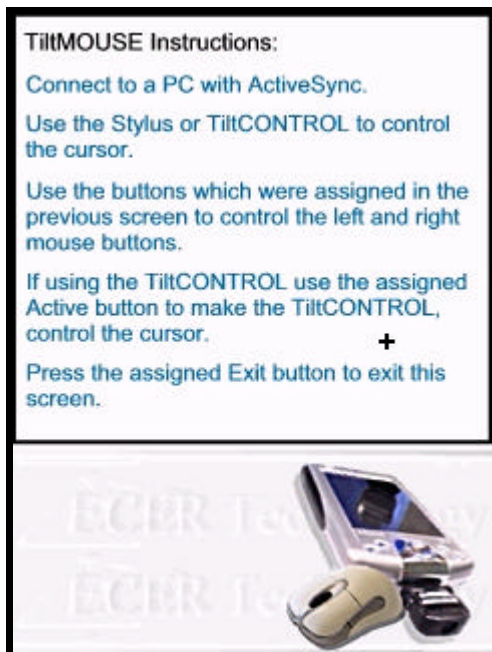
Exit Button

The button that will be used to exit the TiltMOUSE Pad screen.

Once you have setup the buttons you can launch the TiltMOUSE Pad.

To do this press the **Launch TiltMOUSE Pad** on the menu.

You will be shown the screen below which will give you instructions on how to operate the TiltMOUSE.



You should be able to touch the screen with the stylus now and see a movement of the PC cursor.

If you have a wireless ActiveSync connection to your PC you can try the TiltCONTROL.

Plug the TiltCONTROL in and try pressing the Active button and tilting the Pocket PC to move the cursor on the PC.

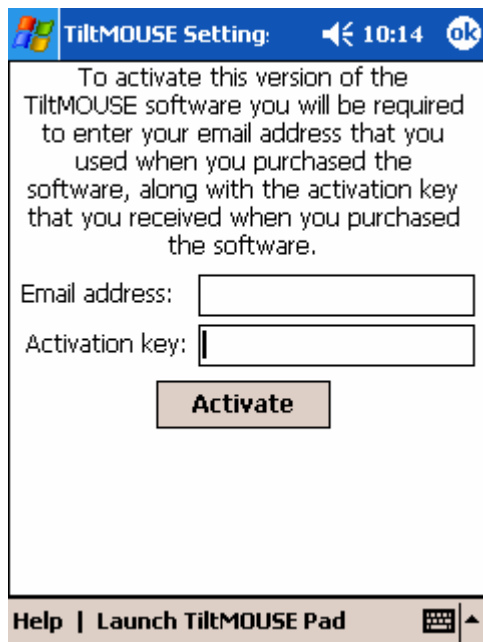
If you have any problems or suggestions for improvements, please contact support@ecertech.com.

Enjoy.

4 Activating the Program

When the TiltMOUSE software is first installed it will run in Demo mode. When operating in Demo mode you will only be able to turn the TiltMOUSE on for 30 seconds at a time, at which time it will turn off automatically.

To activate the TiltMOUSE software you will first need to purchase the software from ECERTech.com, at which time you will be supplied with an Activation key that is derived from the email address that you supplied when you purchased the software. Once you have this Activation key you will need to launch TiltMOUSE on the Pocket PC, and select the **Activate Program** item from the **Help** menu. Once you have done this the Activate Program screen will be displayed as shown below. Simply enter your email address and the activation key that you were provided with and press the Activate Now button. You will either be shown a successful activation message or given a reason why the activation was not successful. Once activated, next time you start the TiltMOUSE software it will run in full mode.



The screenshot shows a dialog box titled "TiltMOUSE Setting:" with a blue header bar. The header bar contains a Windows logo, the title "TiltMOUSE Setting:", a back arrow, the time "10:14", and an "ok" button. The main content area has a white background with black text. The text reads: "To activate this version of the TiltMOUSE software you will be required to enter your email address that you used when you purchased the software, along with the activation key that you received when you purchased the software." Below this text are two input fields: "Email address:" followed by a text box, and "Activation key:" followed by a text box. Below the input fields is a button labeled "Activate". At the bottom of the dialog box is a footer bar with a white background and black text. The footer bar contains the text "Help | Launch TiltMOUSE Pad" followed by a keyboard icon and an up arrow.

Contact Information

Website : www.ECERTech.com

Email: support@ECERTech.com

Ph: +61 7 3822 7888