

ECER Technology **TiltDISPLAY** Quick Start Guide



Table Of Contents

<i>1</i>	<i>Introduction</i>	<i>2</i>
<i>2</i>	<i>Getting started with the TiltCONTROL</i>	<i>2</i>
<i>3</i>	<i>Using TiltDISPLAY</i>	<i>3</i>
<i>4</i>	<i>Activating the Program</i>	<i>5</i>

1 Introduction

Welcome to the TiltDISPLAY Quick Start Guide. The purpose of this guide will be to quickly guide you through the features of TiltDISPLAY and how it is used.

2 Getting started with the TiltCONTROL

Once you have downloaded the latest version of the software from www.ecertech.com/downloads.aspx, make sure that your PDA is connected to your PC and run the setup file from your PC. This will install the software on your PDA.

To test the operation of the TiltCONTROL follow the steps below:

- Select **Start->Programs->TiltCONTROL->TiltCONTROL Settings**
- This will launch the TiltCONTROL Settings program.
- The next step is to plug the TiltCONTROL into the base of the PDA.
- If the software has been installed correctly, then you should be able to move your PDA around and see the TiltCONTROL Readings change as it is tilted.

NOTE: If it is not working then make sure the **Disable TiltCONTROL** checkbox is not checked.

- The next step is to calibrate the TiltCONTROL for your PDA. The quickest way to do this is to choose the **Manual Calibration** method, by pressing the **Manual Calibration** button. The **Calibration Wizard** is a more detailed step by step process of calibrating the TiltCONTROL and is fairly self explanatory so it will not be covered in this guide. Please feel free to go through the calibration process using the Calibration Wizard.
- Once you have pressed the **Manual Calibrate** button, the **Calibrate TiltCONTROL** screen will be displayed.
- Place the PDA flat on a desk or other flat surface and press the **Zero G Calibrate** button. This will calibrate the TiltCONTROL for Zero Tilt conditions. You should see the Horizontal Tilt and the Vertical Tilt stay around 0 degrees when the PDA is flat on the desk, if it has been calibrated correctly.
- To calibrate the TiltCONTROL more accurately you can also choose to calibrate it by placing it in the four positions where it will receive maximum tilt. Note that this step is **not** necessary, and will only result in minor gains in accuracy.
 - To do this you will need to calibrate the TiltCONTROL in the four different positions as shown at the bottom of the **Calibrate TiltCONTROL** Screen.
 - To calibrate in each of the four orientations simply hold the device upright, in the same orientation as shown in each of the four pictures shown and press each picture. You should see one of the calibration constants change to indicate that the device is being calibrated. The default value for each of the constants is 12.5. If the values are not within ± 3 of 12.5 then something has been done incorrectly, and you should try repeating the process.
- Press OK once you have finished calibrating the TiltCONTROL.

TIP: The TiltCONTROL will run all of the time and allow other applications to use the TiltCONTROL as long as the **Disable TiltCONTROL** check box is not set, which is shown on the main screen of the TiltCONTROL settings.

3 Using TiltDISPLAY

Now that the TiltCONTROL is calibrated and working, it is time to get started with TiltDISPLAY.

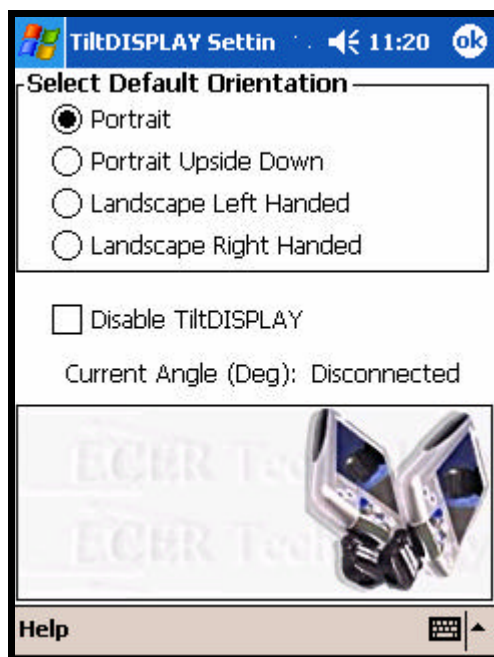
When you purchased TiltDISPLAY you would have also received an Activation Key that you will need in order to activate your version of the TiltDISPLAY software. For more information about how to activate the program, please read the section at the end of this guide. Until you activate you will only have a 30 second time limit each time you launch the TiltDISPLAY program.

To get started you must first download and install the latest version of the TiltDISPLAY software. This can be downloaded from www.ecertech.com/downloads.aspx.

Once installed there will be a program installed on your Pocket PC called TiltDISPLAY Settings, which will be found in the folder Start\Programs\TiltCONTROL).

Start the TiltDISPLAY Settings program.

Once started the following screen will be displayed.



Each of the items on this screen are described below.

Select Default Orientation

The Default Orientation is the orientation the screen will be restored to if the TiltCONTROL is disconnected or the TiltDISPLAY is disabled. The following four screen orientations are available.

- Portrait**
- Portrait Upside Down**
- Landscape Left Handed**
- Landscape Right Handed**

Disable TiltDISPLAY

If this checkbox is selected then the TiltCONTROL can be used for other applications and will not cause the screen orientation to change.

Current Angle (Deg)

Displays the current angle that the TiltCONTROL is detecting the Pocket PC to be at.

If TiltDISPLAY is enabled you should be able to plug the TiltCONTROL in and rotate the Pocket PC to change the orientation of the screen. As soon as you unplug the TiltCONTROL, TiltDISPLAY will restore the screen back to the original orientation.

You can completely close the TiltDISPLAY settings program and still use the TiltCONTROL to change the screen orientation.

If you have any problems or suggestions for improvements, please contact support@ecertech.com.

Enjoy.

4 Activating the Program

When the TiltDISPLAY software is first installed it will run in Demo mode. When operating in Demo mode you will only be able to turn the TiltDISPLAY on for 30 seconds at a time, at which time it will turn off automatically.

To activate the TiltDISPLAY software you will first need to purchase the software from ECERTech.com, at which time you will be supplied with an Activation key that is derived from the email address that you supplied when you purchased the software. Once you have this Activation key you will need to launch TiltDISPLAY on the Pocket PC, and select the **Activate Program** item from the **Help** menu. Once you have done this the Activate Program screen will be displayed as shown below. Simply enter your email address and the activation key that you were provided with and press the Activate Now button. You will either be shown a successful activation message or given a reason why the activation was not successful. Once activated, next time you start the TiltDISPLAY software it will run in full mode.

TiltDISPLAY Settin ↔ 🔊 11:20 ok

To activate this version of the TiltDISPLAY software you will be required to enter your email address that you used when you purchased the software, along with the activation key that you received when you purchased the software.

Email address:

Activation key:

Activate

Help  ▲

Contact Information

Website : www.ECERTech.com

Email: support@ECERTech.com

Ph: +61 7 3822 7888